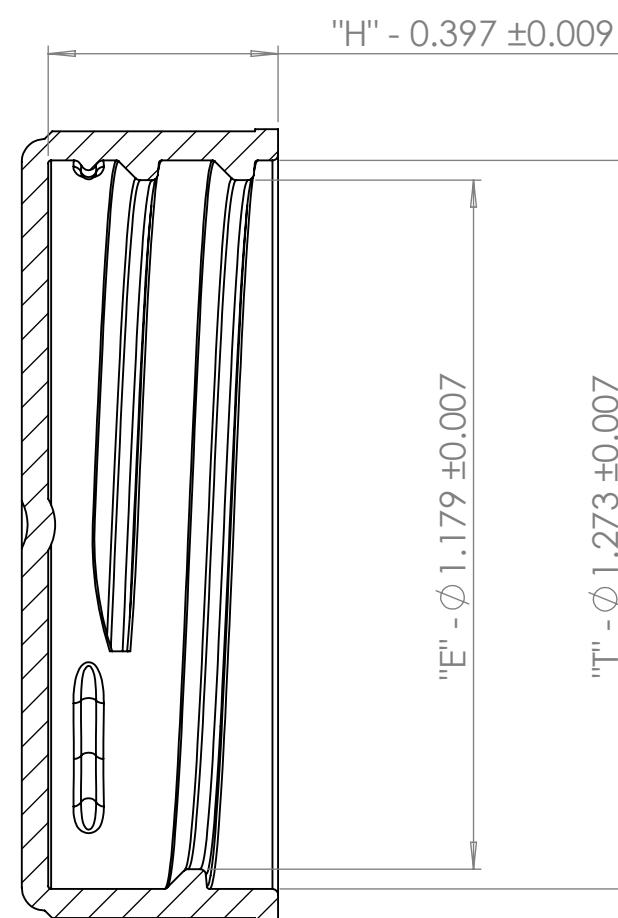
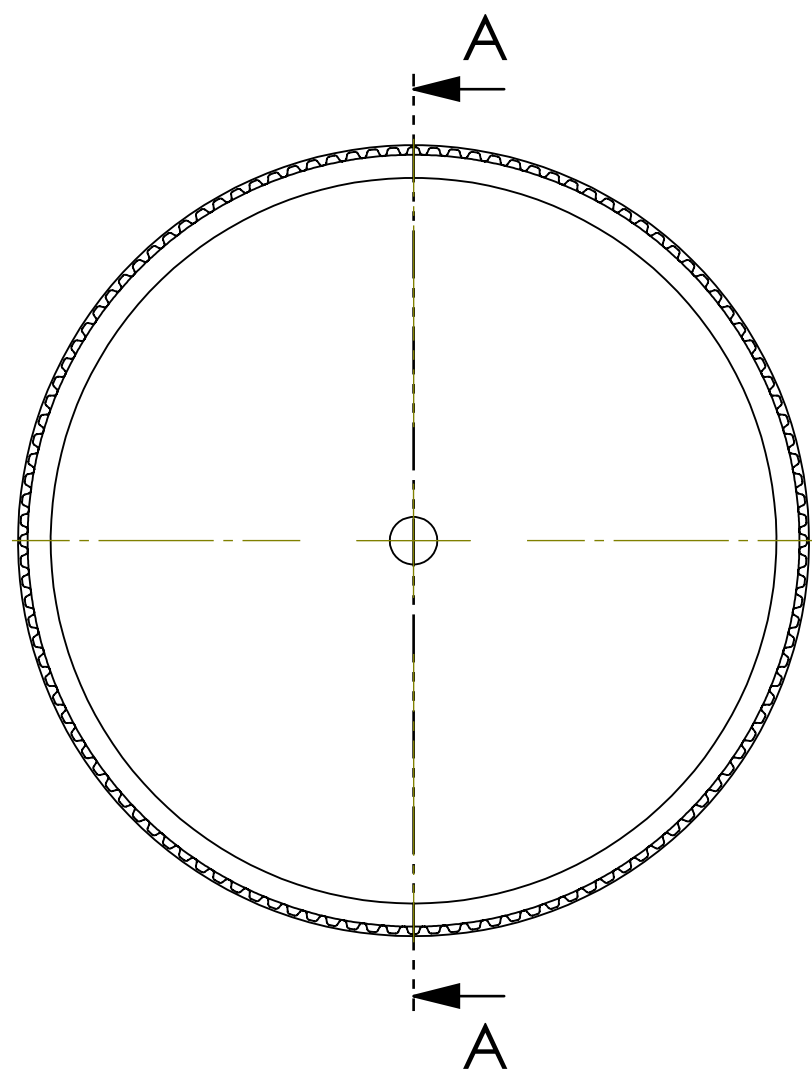


4

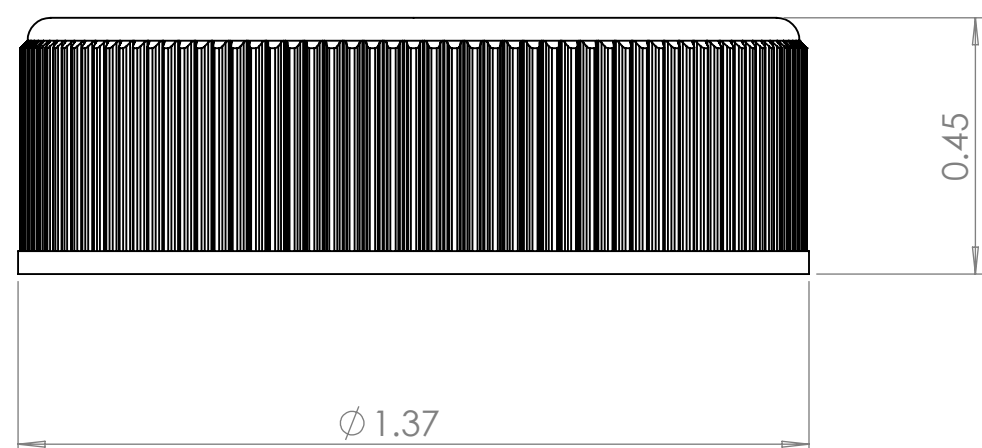
3

2

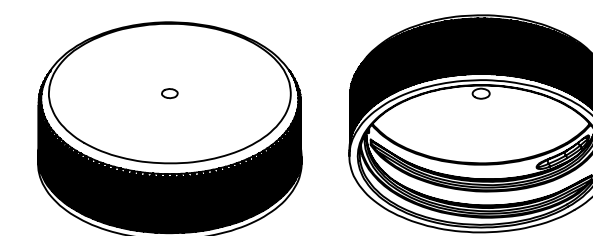
1



SECTION A-A



- NOTE(S):
1. THREAD FORM - 33-400
  2. PITCH - 0.167" (6 T.P.I.)
  3. THREAD TURNS - 1.25



**PROPRIETARY AND CONFIDENTIAL**  
 THE INFORMATION CONTAINED IN THIS DRAWING IS THE SOLE PROPERTY OF PHARMACY-LITE. ANY REPRODUCTION IN PART OR AS A WHOLE WITHOUT THE WRITTEN PERMISSION OF PHARMACY-LITE IS PROHIBITED.

UNLESS OTHERWISE SPECIFIED:		NAME	DATE	<b>PAC-LITE</b> 250 Warden Ave., Elyria, OH 44035 844-527-5483
DIMENSIONS ARE IN INCHES		DRAWN	BC	
TOLERANCES:		CHECKED		TITLE: <b>33mm-EZ NCR (RIBBED) CAP</b>
FRACTIONAL ± 1/32		ENG APPR.		
ANGULAR: MACH ± 0.1°		MFG APPR.		SIZE DWG. NO. REV <b>C</b> EZ-33R NCR/P000CD <b>1</b>
BEND ± 2.5°		Q.A.		
TWO PLACE DECIMAL ± 0.015		COMMENTS:		SCALE: 3:1 WEIGHT: SHEET 1 OF 1
THREE PLACE DECIMAL ± 0.005				
INTERPRET GEOMETRIC TOLERANCING PER:				
MATERIAL				
POLYPROPYLENE				
FINISH				
APPLICATION	DO NOT SCALE DRAWING			

4

3

2

1

D

D

C

C

B

B

A

A